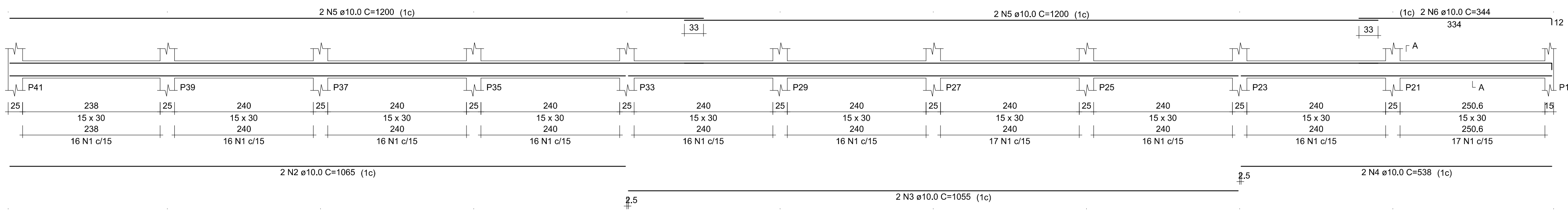


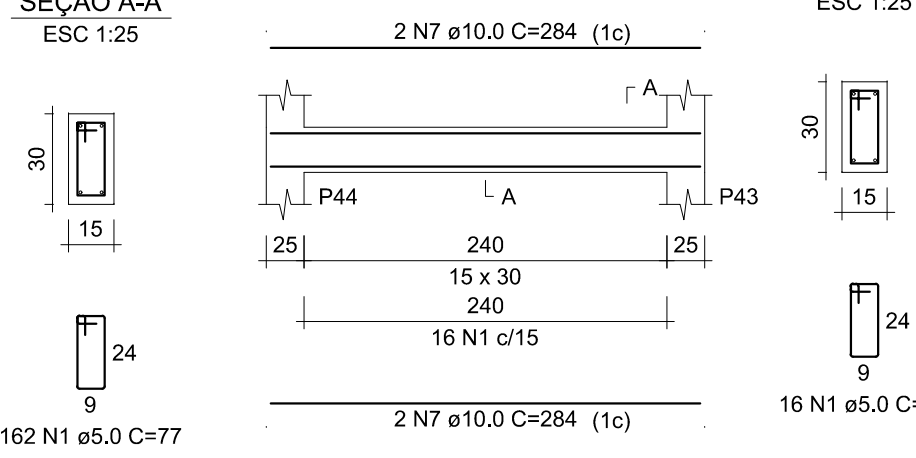
VB17

ESC 1:50



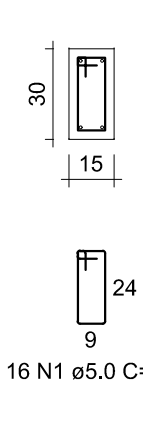
VB18

ESC 1:50



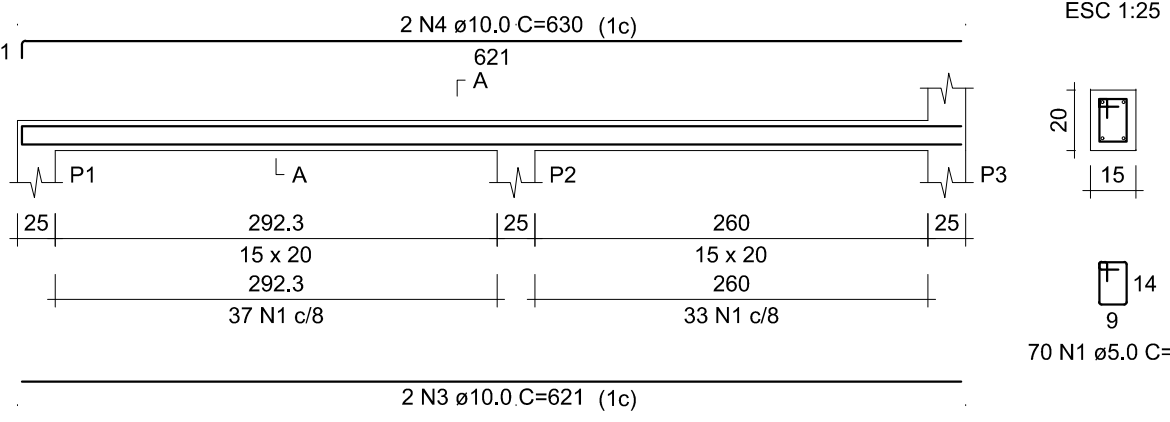
SEÇÃO A-A

ESC 1:25



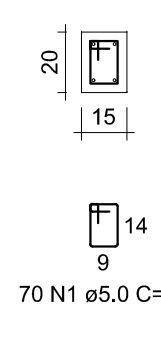
V1

ESC 1:50



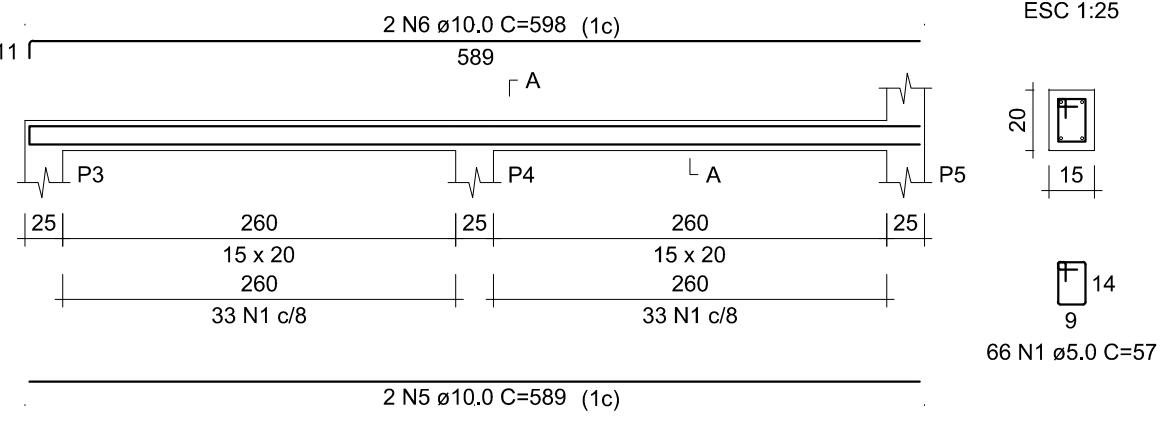
SEÇÃO A-A

ESC 1:25



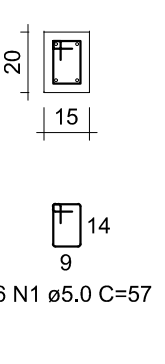
V2

ESC 1:50



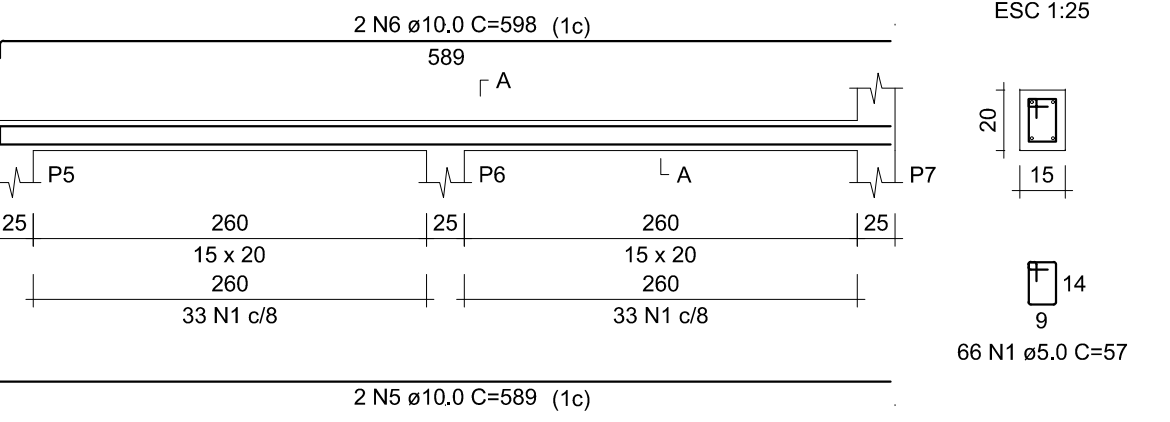
SEÇÃO A-A

ESC 1:25



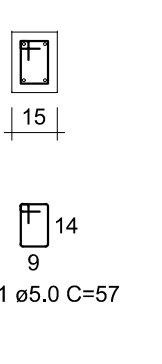
V3

ESC 1:50



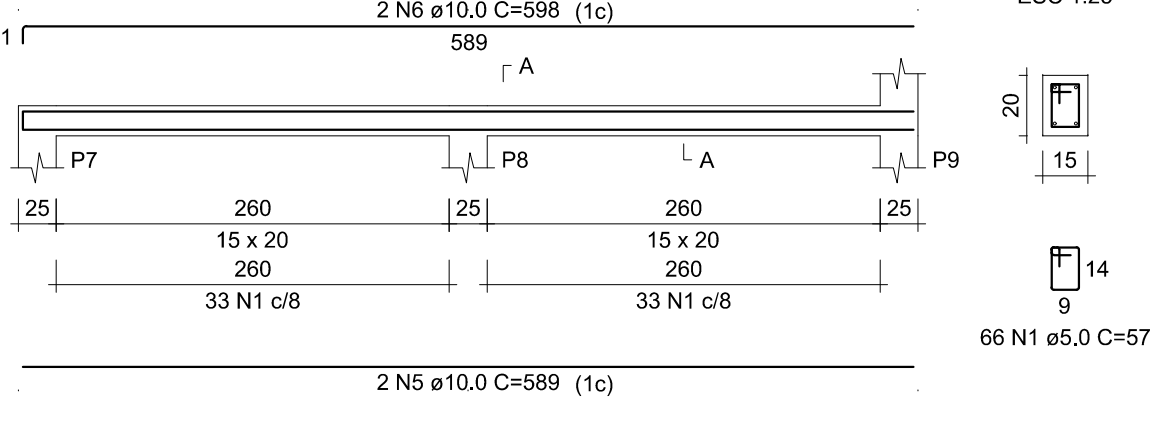
SEÇÃO A-A

ESC 1:25



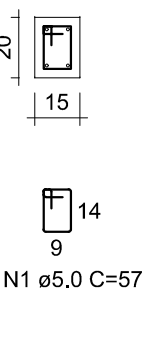
V4

ESC 1:50



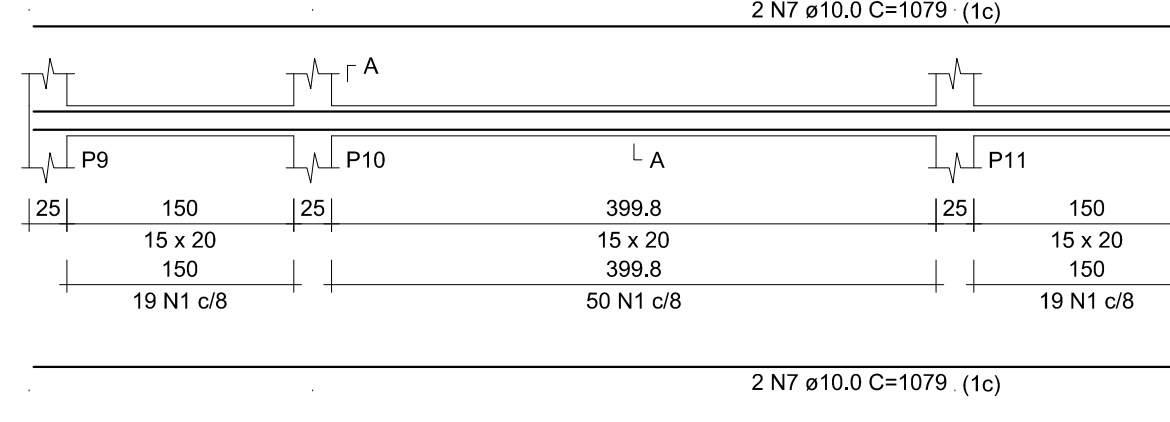
SEÇÃO A-A

ESC 1:25



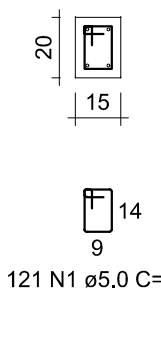
V5

ESC 1:50



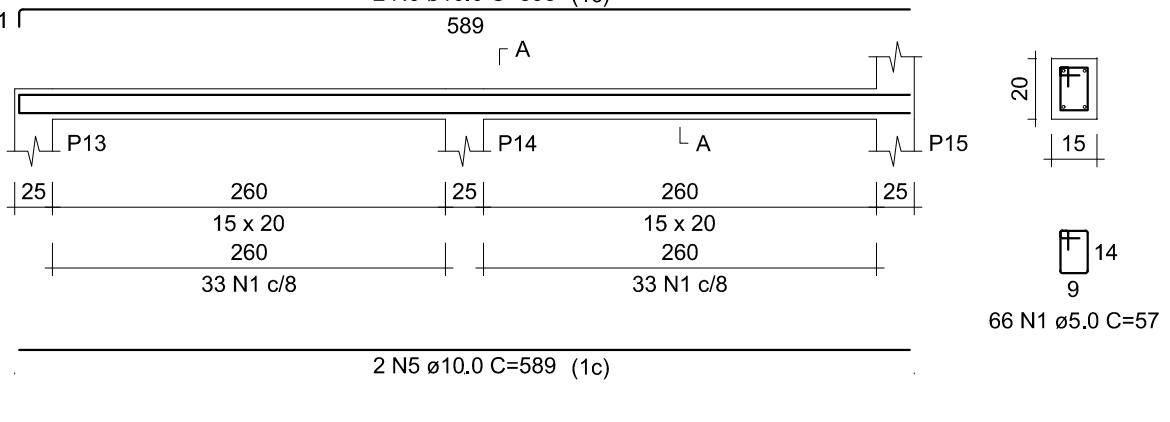
SEÇÃO A-A

ESC 1:25



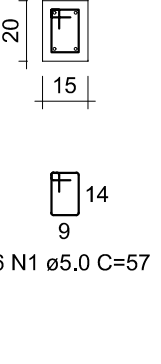
V6

ESC 1:50



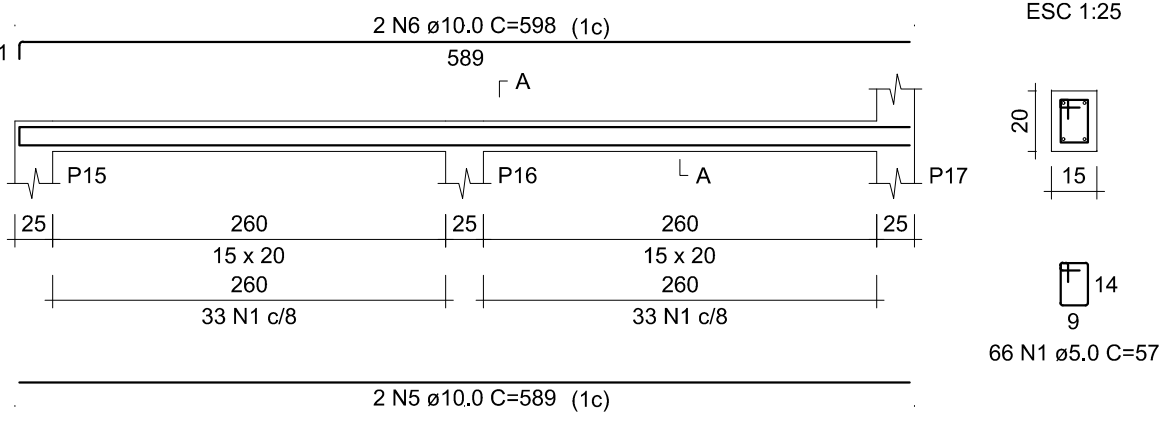
SEÇÃO A-A

ESC 1:25



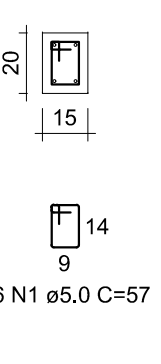
V7

ESC 1:50



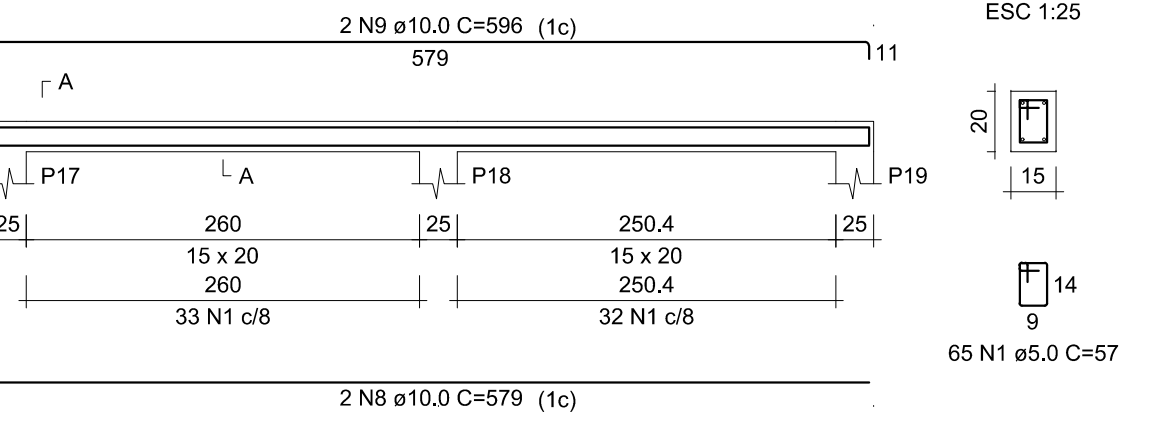
SEÇÃO A-A

ESC 1:25



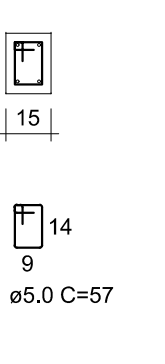
V8

ESC 1:50



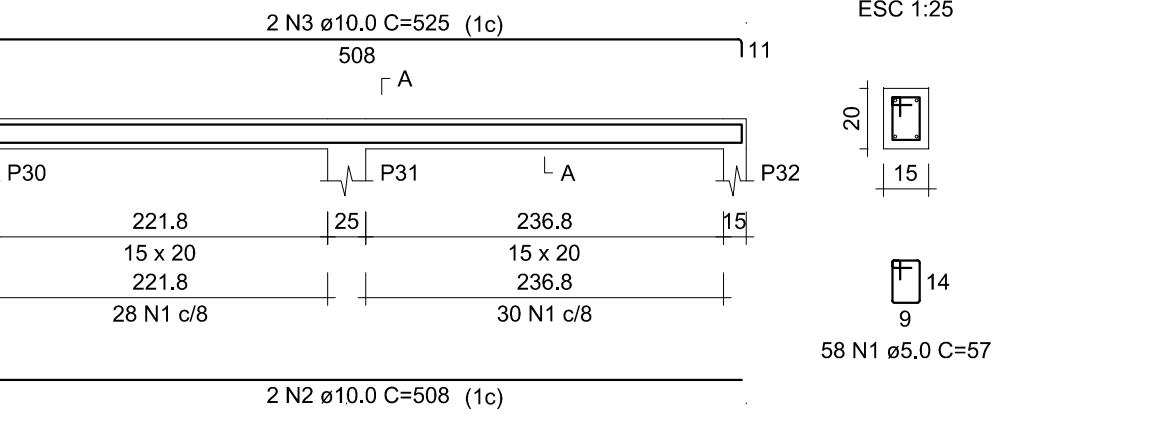
SEÇÃO A-A

ESC 1:25



V9

ESC 1:50



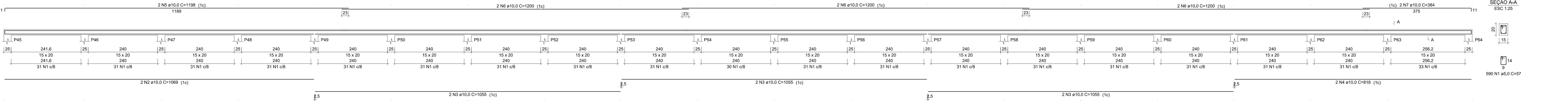
SEÇÃO A-A

ESC 1:25



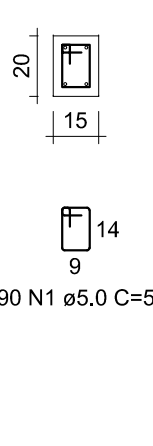
V10

ESC 1:50



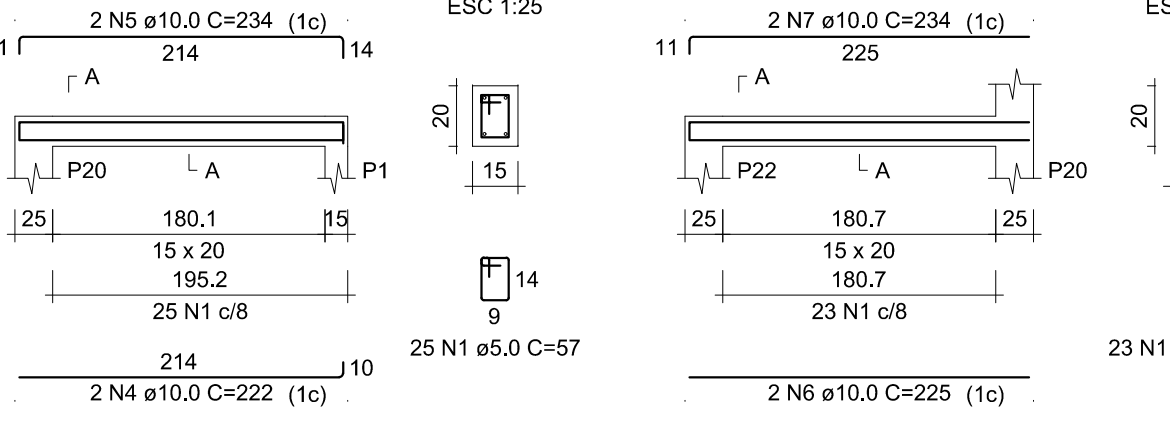
SEÇÃO A-A

ESC 1:25



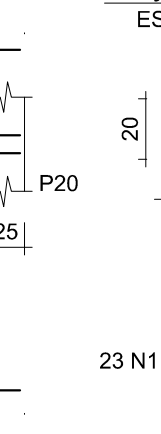
V11

ESC 1:50



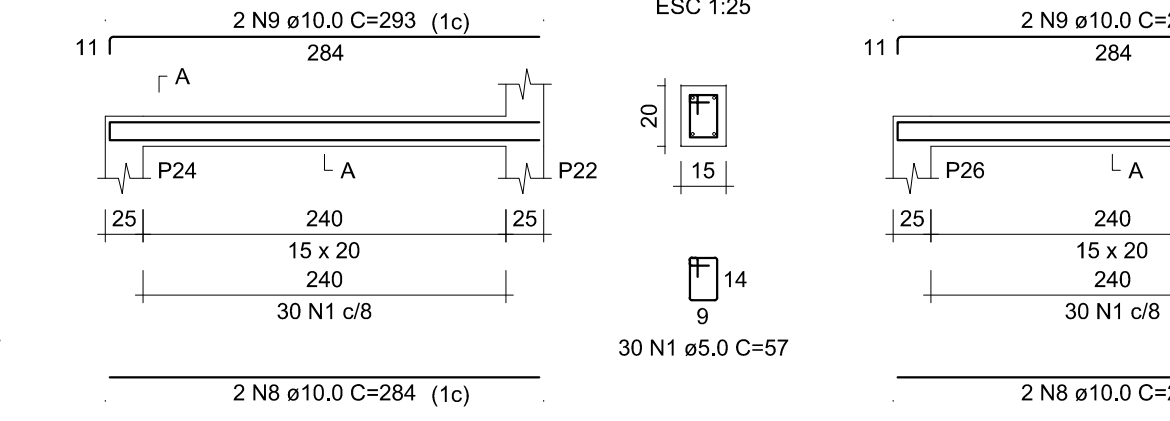
SEÇÃO A-A

ESC 1:25



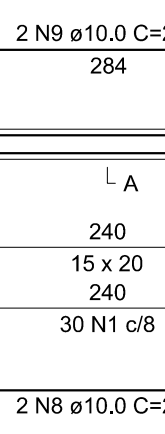
V12

ESC 1:50



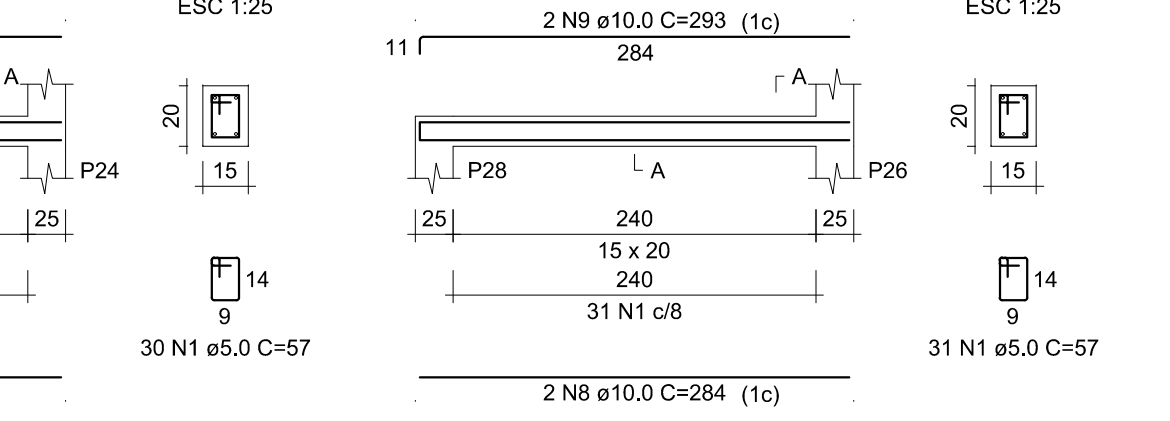
SEÇÃO A-A

ESC 1:25



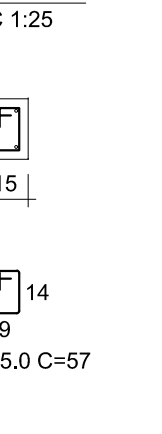
V13

ESC 1:50



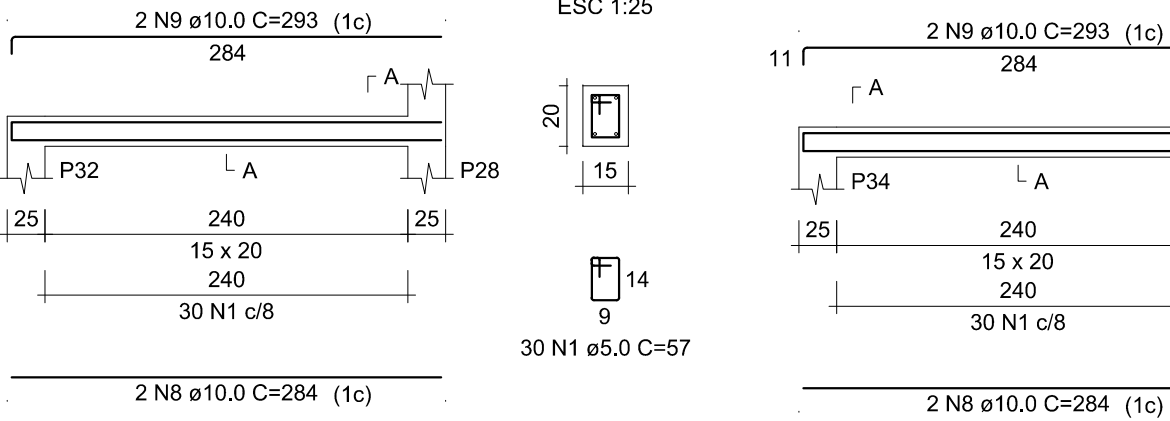
SEÇÃO A-A

ESC 1:25



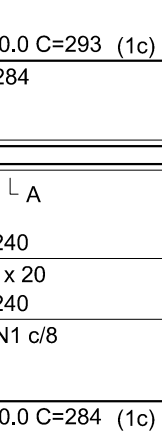
V14

ESC 1:50



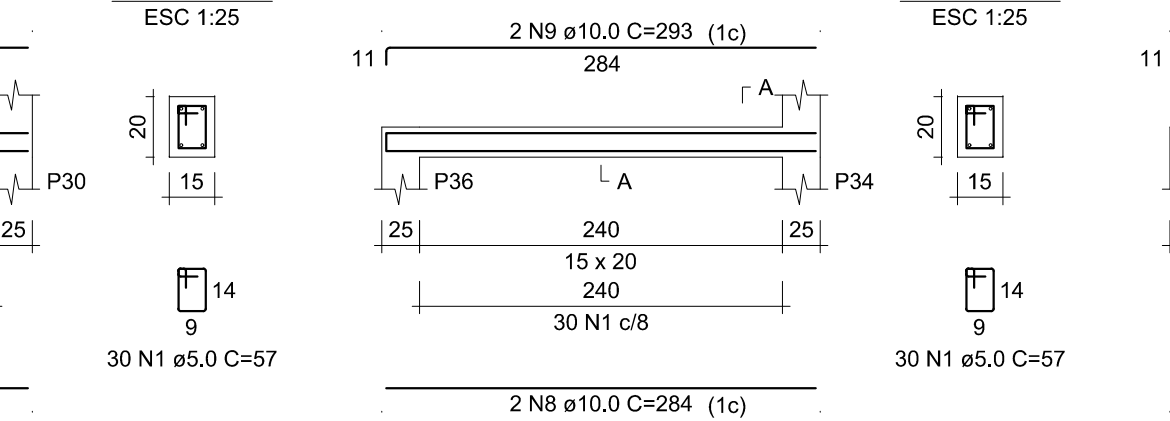
SEÇÃO A-A

ESC 1:25



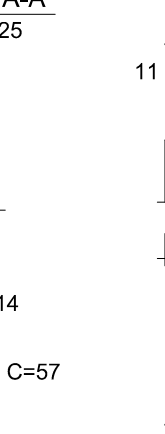
V15

ESC 1:50



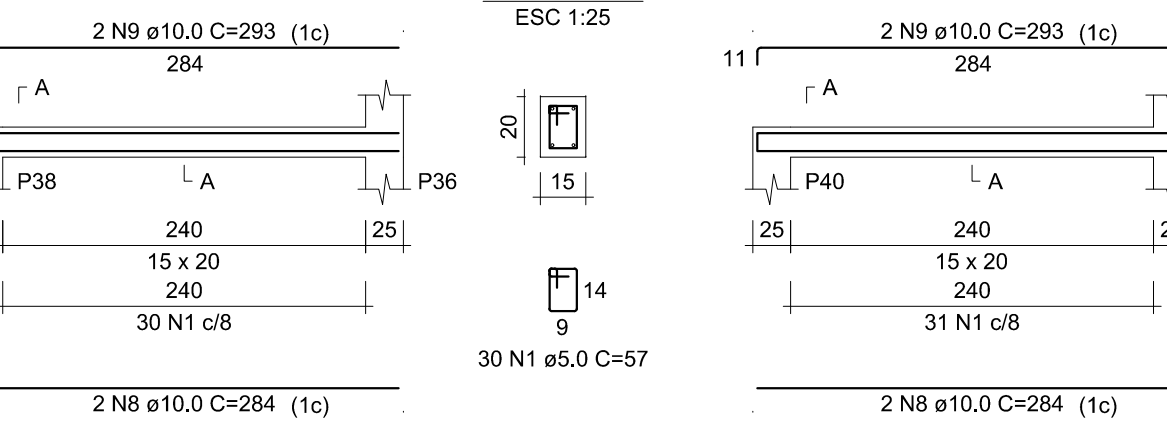
SEÇÃO A-A

ESC 1:25



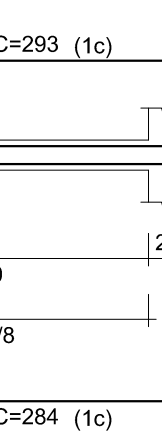
V16

ESC 1:50



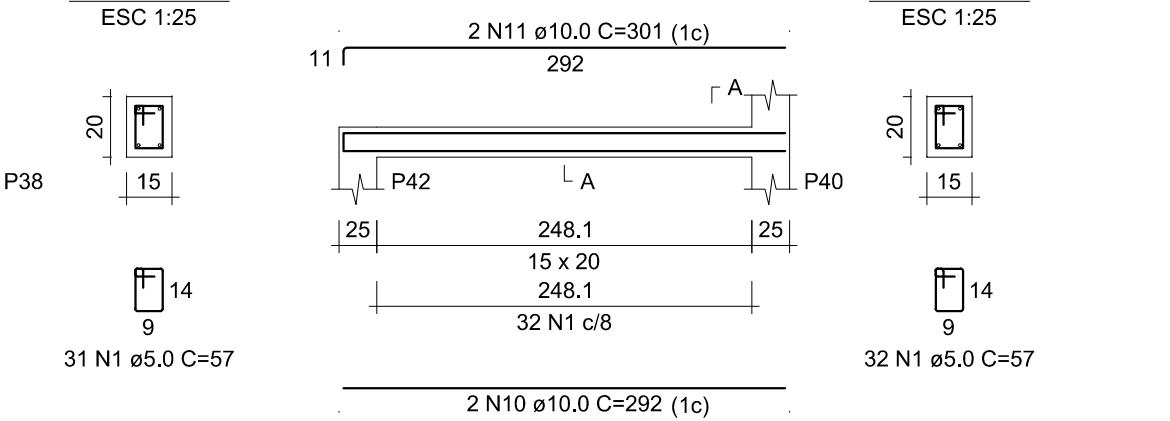
SEÇÃO A-A

ESC 1:25



V17

ESC 1:50



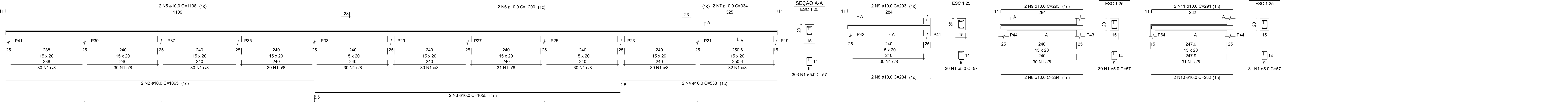
SEÇÃO A-A

ESC 1:25



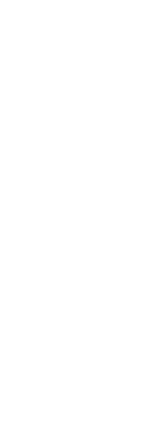
V22

ESC 1:50

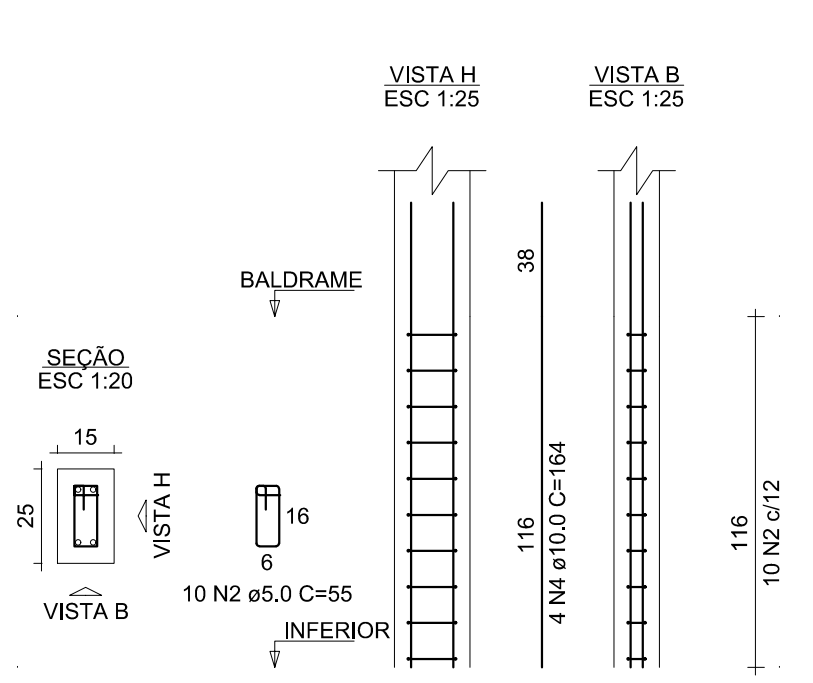


SEÇÃO A-A

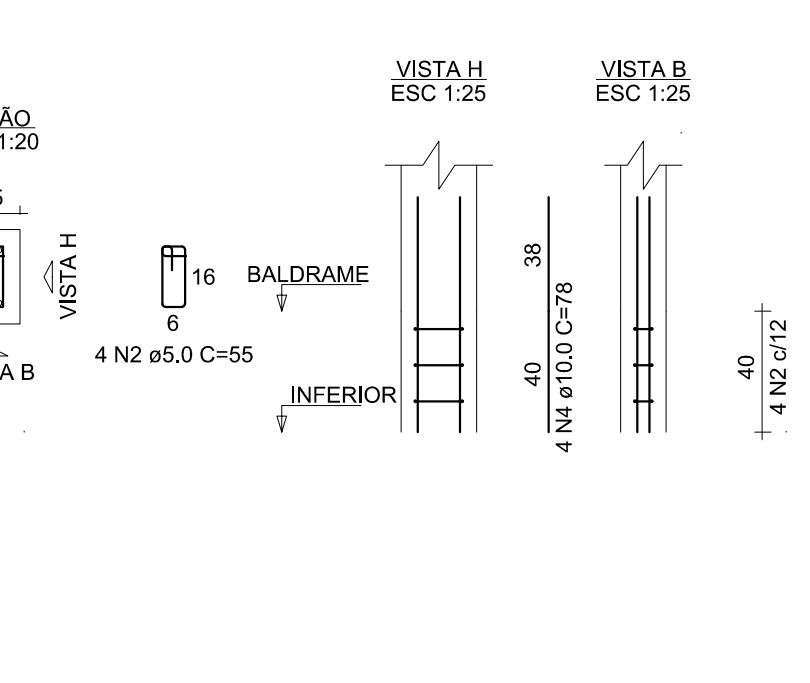
ESC 1:25



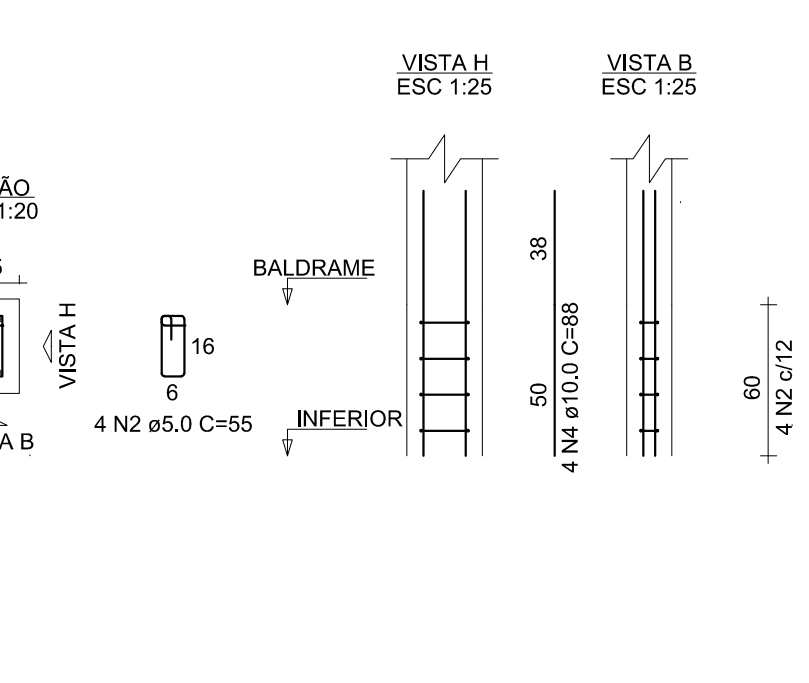
P1=P13=P14=P20=P22=P24=P43



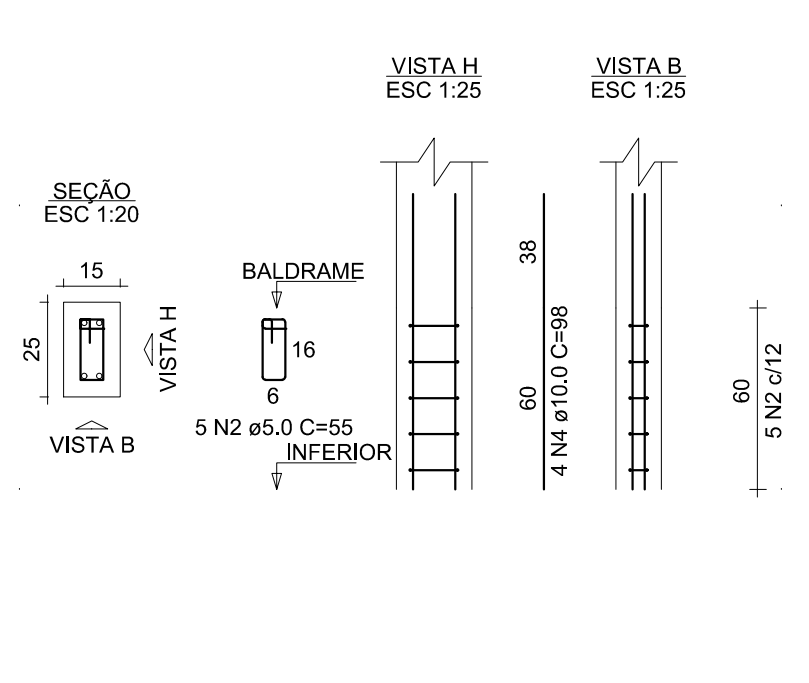
P2=P40=P42=P44



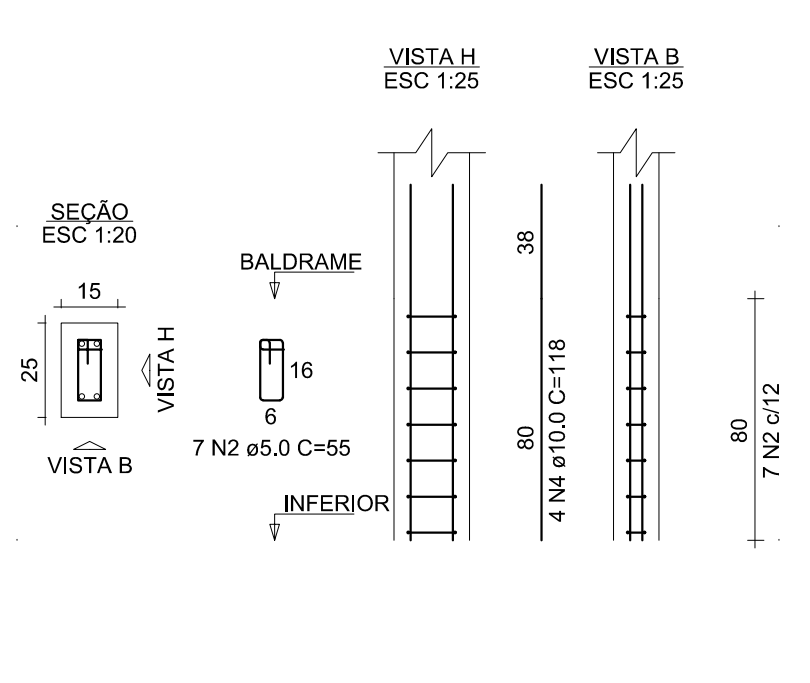
P3=P4



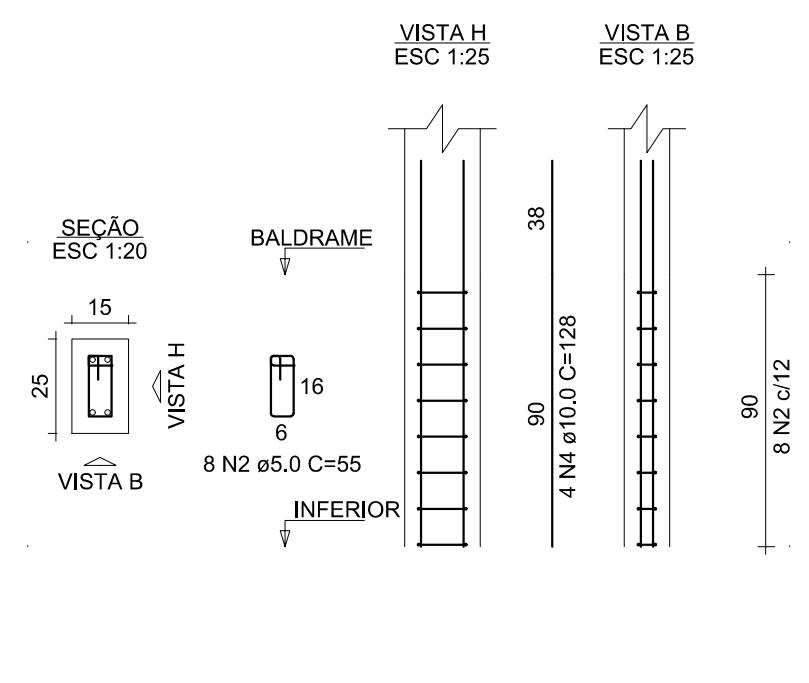
P5=P6=P36=P38



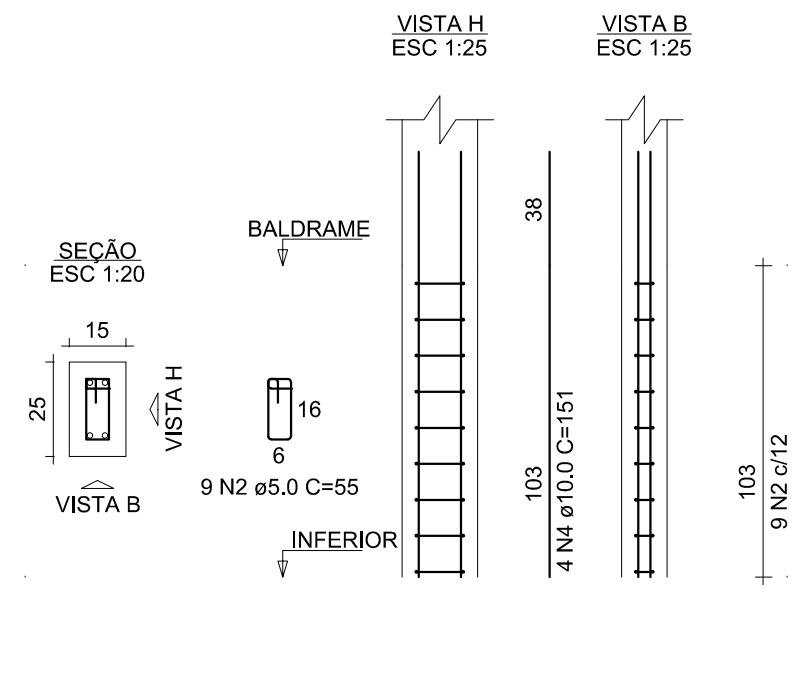
P7=P8=P30=P31=P32=P34



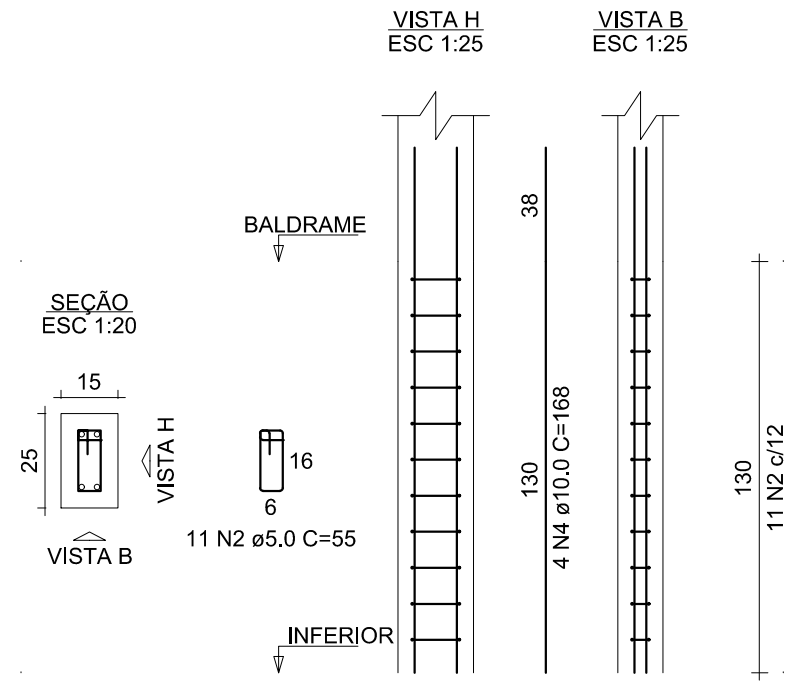
P9=P10=P26=P28



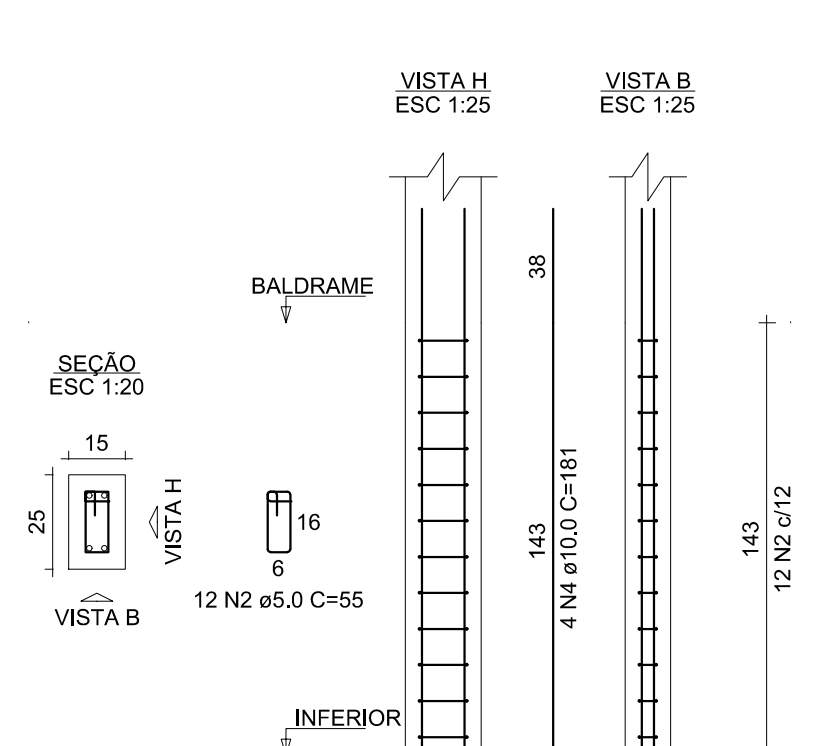
P11=P12



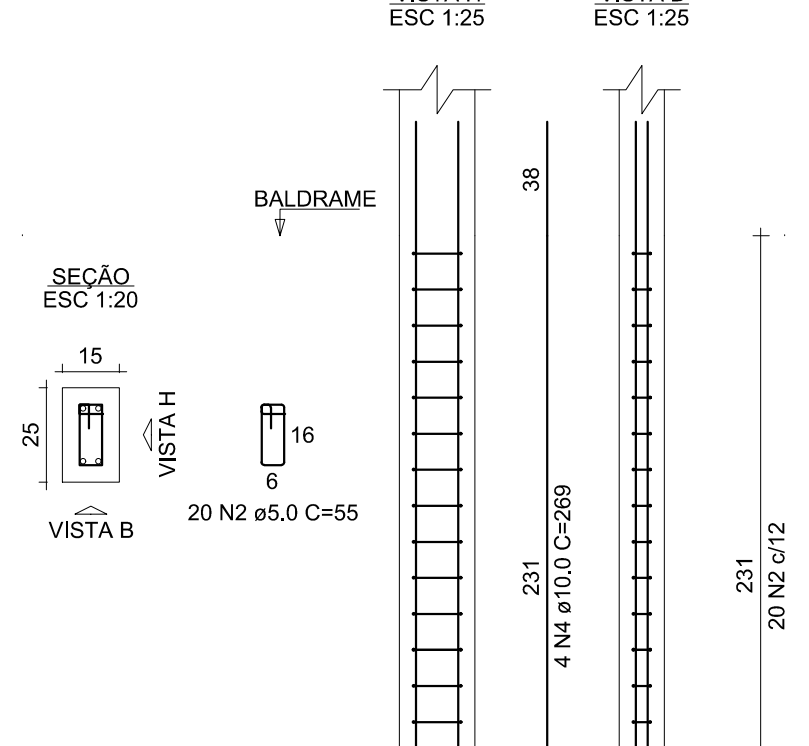
P15=P16



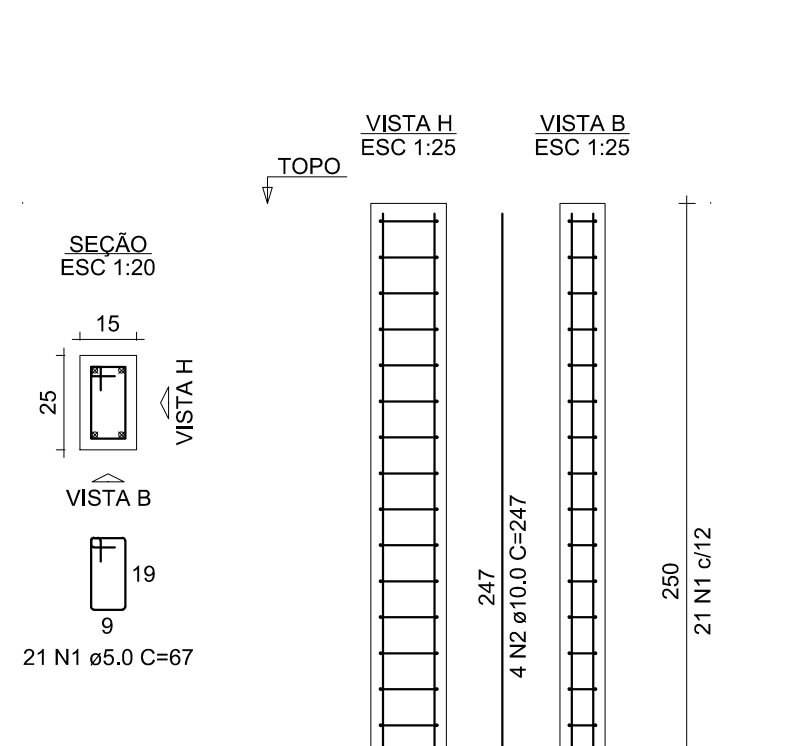
P17=P18



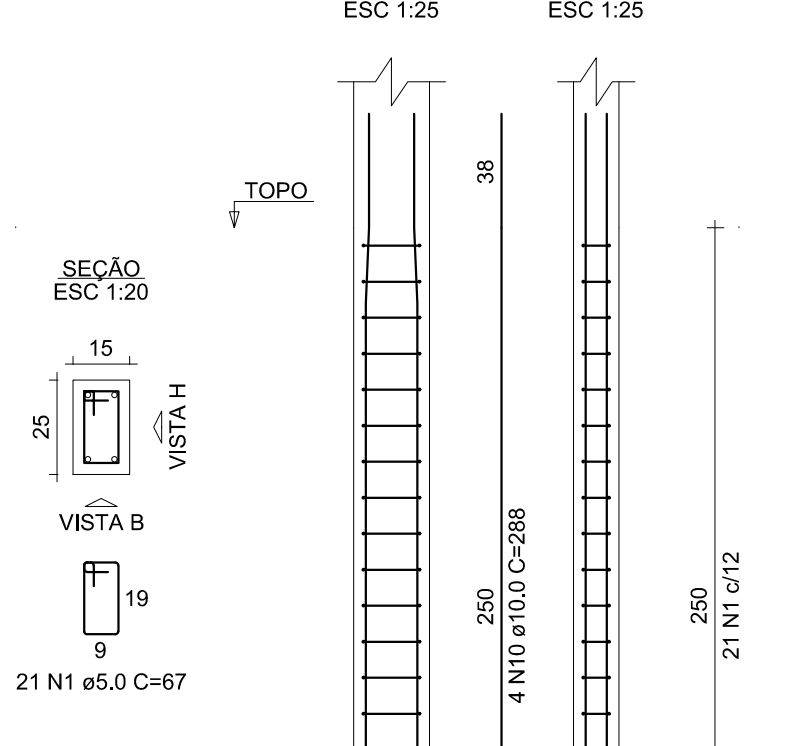
P19=P21=P23=P25=P27=P29=P33=P35=P37=P39=P41



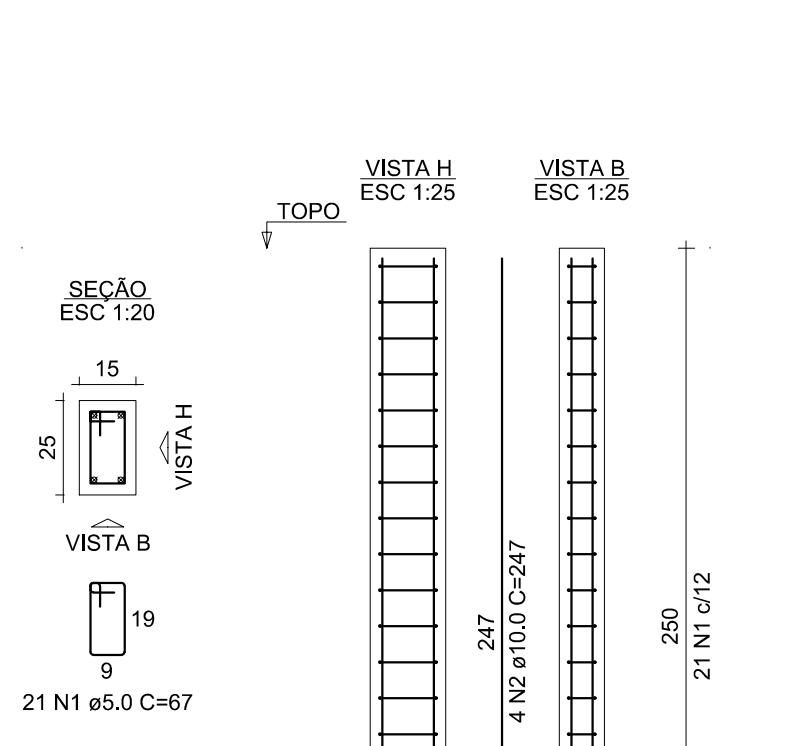
TOPO - P1=P2=P3=P4=P5=P6=P7=P8=P13=P14=P15=P16=P17=P18=P19=P20=P21=P22=P23=P24=P26=P28=P29=P30=P31=P32=P33=P34=P35=P36=P37=P38=P39=P40=P41=P42=P43=P44



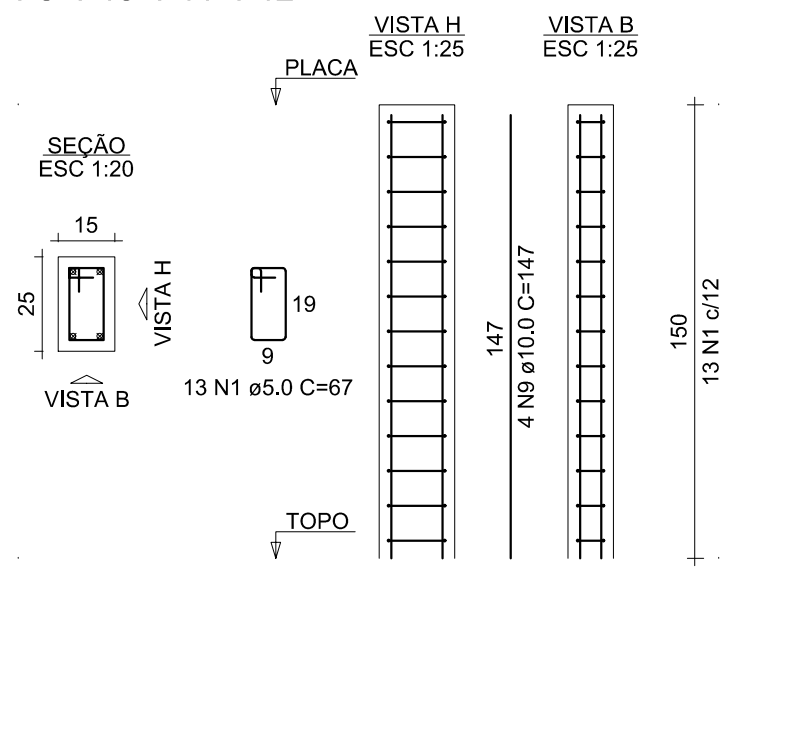
TOPO - P9=P10=P11=P12




TOPO - P45=P46=P47=P48=P49=P50=P51=P52=P53=P54=P55=P56=P57=P58=P59=P60=P61=P62=P63=P64



SUPORTE PLACA - P9=P10=P11=P12



TÍTULO: PROJETO - MURO DE FECHAMENTO E ESTACIONAMENTO - ESCOLA MUNICIPAL JOÃO ANTONIO MENDES									
	DETALHE: PROJETO ESTRUCTURAL		ENCOMENDADO: RUA FRANCISCO CORNÉLIO MENDES, N° 2, ABATE DOS MENDES - RIO PARANAÍBA		PROPRIETÁRIO: PREFEITURA MUNICIPAL DE RIO PARANAÍBA		AUTOR: BETHANIA CARLA FERNANDES		
	CONTEÚDO: VIGAS - V17 A V18; VIGAS - V19 A V20; PLACAS INFERIORES - P1 A P44; PLACAS TOPO - P1 A P44; PLACAS SUPORTE PLACA - P9 A P12.		CNPJ N°: 18.602.045/0001-00		R.T.:		ROBSON CASTRO DE RESENDE		
	BETHANIA CARLA FERNANDES		ENGR° CIVIL - CREA MG 244.289/D		SECRETÁRIO MUNICIPAL DE INFRAESTRUTURA, TRANSPORTES E OBRAS		RUBSON CASTRO DE RESENDE		
	ALTURA MURO: 2,50m	PERÍMETRO MURO: 174,48m	ZONA: URBANA	MEDIDAS: CENTÍMETROS	ESCALA: INDICADA	DATA: DEZ/2025	FOLHA: 04 / 04	FORMATO: A0	